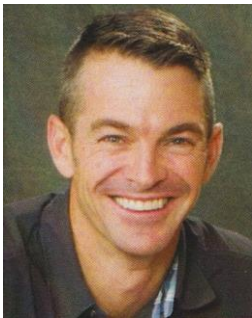




April 2018

“We exalt God above all by evangelizing, equipping and embracing all nations.”



The Significance of our Adoption

“For you did not receive a spirit that makes you a slave again to fear, but you received the Spirit of sonship. And by him we cry, ‘Abba, Father.’”

Romans 8:15

The Scriptures employ a number of images to describe the spiritual reality of salvation. They speak of our adoption through Christ (Eph 1:5), our union with Christ (Col 2:13), our abiding with Christ (John 15:5), and our participation in Christ (Rom 8:1). While these analogies all differ, Christ remains central to each of them, as does our relationship to Him. In every Scriptural portrayal of salvation, we are pictured as being brought into relationship with God through Jesus Christ. This is a union that we do not initiate (Eph 2:4–5) and that we cannot terminate (Rom 8:30).

Sadly, I believe that we live in an age where both the beauty and significance of this spiritual reality has been lost. Today, many see salvation like a Sam’s Club membership which serves their purposes but requires nothing more than occasional participation in ecclesial activities. From this perspective, God is viewed as a distant deity with little to offer the created order in the present. In fact, for many, God has little to do with the here and now because they believe He

endowed humanity with the capacity to achieve all that they desire. People possess incredible potential; all they need to do is unlock it. Besides being unbiblical, this perspective fails to account for the massive and continued moral failings that mark the created order. Human beings have not achieved nirvana, and despite the many steps that we see being taken that may be described as “progress,” we remain deeply flawed and desperate for meaning. This is why the biblical imagery is so poignant.

Drawing upon just one of the pictures given us in the Scriptures, that of adoption, we see how salvation in Christ provides us with both eternal assurance of life and a new identity in life. As children of the God who spoke all that is into being (Gen 1:1), we now share in the life that God is. Further, as His sons and daughters, the life we live, we live by faith in growing conformity to our identity (Gal 2:20). In other words, as God’s children we can never become more or less than what He has already made us.

Immanuel, let us live in conformity to our identity as sons and daughters of God.

Rejoice!
Andrew Morgan





Coffee Fellowship We have coffee in the Fellowship Hall before Sunday School every Sunday morning. Monthly breakfasts will not be served till further notice, but join us for fellowship and a cup of coffee every Sunday.

GREETERS SCHEDULE

April

Kat Reeves (west)
Elizabeth Rosenberg (east)
Alonia Robinson (south)

NOTE: Feel free to change doors assigned. This way you may meet new or old friends!!!

WEDNESDAY NIGHT DINNER MENUS FOR APRIL

Be sure to sign up for the dinners. If you enjoy the desserts, please sign up on the sheet provided. Also, sign up to help with cleanup.

- Apr 4 – Beef Stroganoff, green beans
- 11 – Chicken stir-fry, Asian veg., rice
- 18 – Spaghetti, garden salad
- 25 – Chicken noodle, vegetable beef soup and sandwiches



The deadline for submitting items of interest for the **May newsletter** is Thursday, April 19.


Alleluia!
CHRIST IS RISEN



The Spring discipleship course began on Wednesday, March 28, with a brief introductory session following the church business meeting. The first full session will be held on April 4.

Titled “Work as Worship,” the six-week course demonstrates how work intersects with faith in whatever job or career field Christians pursue. It will show that faith should not be seen as something for Sunday morning only, but should affect how we walk with God all week. Scripture makes no division between the sacred and secular parts of our lives and God gives us our work, talent, and skills so that through them we might worship Him.

The teacher, J.D. Greear, will use biblical teaching, real-life documentary stories, and video illustrations to help participants understand the biblical mandate for work. Retirees can find the course helpful since whatever jobs they are called upon to do should be carried out with the same desire for excellence and integrity.

Dr. Greear pastors the Summit Church in the Raleigh-Durham area of North Carolina. He has written a number of publications including “Gospel.” His church is very active in church planting activities, having sent out more than 650 people on church planting teams.

The course sessions will begin at 6:15 p.m. following the Wednesday evening dinners.



Shut-in Ministry

The church has homebound members. If you would like to visit, call or send a card, call the office or Nancy Lambert for names and addresses. We also have some who have long-lasting illnesses or burdens. Look around when

you come to a service. If someone is missing a few weeks, make a call to see if they need help. They might just need to know we care and miss them. As a family, let us . . . ”*consider how we can spur one another on toward love and good deeds.*”

(Heb. 10:24)

*****IMMANUEL ON MISSION*****

Mission Partners

ESL meets on Thursday nights and the **ESL Women’s Bible Study** meets on Tuesday mornings. Continue to pray for this ministry.

James and Sarah, **IMB**, have led two trainings on “How to live a life of gospel ministry” and will return to the mission field soon.

Debbie Dean, **CRU**, took students from Salisbury University to a Spring Break outreach in Panama City, Florida.

Redemption City Church, Baltimore, had its first service on March 25.



Mission Education

GAs -- The Girls in Action group thank you for your generous donation of \$806 to the “Pure Water, Pure Love” offering. Missionaries around the world and the people they serve will benefit greatly because of your kindness.

RAs – The RAs went to RA Congress in March to learn about missions..

WMU -- Southern Baptists have the opportunity to both love God and their neighbors by giving spiritual and physical assistance to impoverished people – men, women and children – whose very lives are threatened by hunger.

Global Hunger Funds are making a transforming difference by connecting people in need with people who care. “And who is my neighbor? . . .The one who showed mercy toward him.” (Luke 10:29-37)

Please place your Bread Bank on the table in front of the Sanctuary. May God richly bless the neighbors receiving the gift and the givers for their participation in this mission effort.

The WMU will continue to receive your contributions to the **Annie Armstrong Easter Offering** and expect to reach our \$3,000 goal. The amount collected as of this writing is \$2,556.81

Brotherhood – All men are invited to their monthly meeting on Saturday, April 7, at 8:45 for breakfast and fellowship.

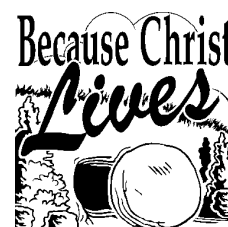
Members on Mission

We will join with members of the Ocean City Baptist Church on July 30 to serve a meal for International Students.

Missions Team

Thank you for praying for the Mali people to be reached. They have been engaged and we are praising God for that and praying with James and Sarah for the Maithili people who are unengaged and unreached.

The Missions Team will meet on Tuesday, the 10th of April, at 3:30 p.m.





COTTER'S COMMENTS

Thank you for all of your prayers for the Young Adult Small Group over the past few months! Emily and I are so grateful for your love and support. The small group has been going great! We have been studying through the book of Colossians, learning all about the supremacy of Christ and how we respond to the gift of salvation. It has been so encouraging to have the opportunity to meet weekly with friends to study the Bible !

Please continue to pray for this small group. Pray specifically that it will be a fruitful time of fellowship, encouragement, and spiritual growth for each person in attendance.

Thank you for the prayers for the Youth of Immanuel as well! We have been studying through James on Wednesday evenings and have had some fun opportunities to fellowship during game nights during the past two months!

Please continue to pray for our youth. Pray specifically for our trip to reCHARGE camp at Skycroft this June!



APRIL

- 8 Laura Culver
- 9 Cheryl Moore
- 11 Amanda Wootten
- 14 Emily Johnston
- 19 Linda Webster
- 26 Linda Lewis
- 29 Cindy Muenster
- Kane Niblett



YOUR TRUSTEES AT WORK

The trustees have been very busy maintaining and improving our facilities during warm as well as bitter cold weather. Some of the things that have been accomplished are:

- Installation of additional lighting
- Replacement and repairs to HVAC units
- Replacement of water heater
- Repairs to water pump fittings
- Repair and reroute of kitchen drain
- Replaced some locksets
- Repaired lighting on front sign
- Installed siding on yellow shed
- Plumbing repairs
- Had facilities power washed
- Received permission to have lot paved
- Had lights erected in parking lot

As you can see, they have been very busy. They also intend to plant some flowers for our enjoyment.

B-I-B-L-E

BIBLE: Basic Instructions Before Leaving Earth

Recall the old story of the grandmother who was reading the Bible. When her grandson asked her why, she said, "I'm getting ready for my final exam."

REMEMBER IN PRAYER

PERSONAL AND SPIRITUAL NEEDS

Hunt, Danielle – (Johanne)
 Manning, Ashley – (Shirley)
 Meadows family – (S. Wood)
 Pusey, Pat – (Rosa)
 Ross Family – House fire

MEDICAL

Baranowski, Sara – recuperating
 Bean, Rosa – Recovering
 Bounds, Amy
 Bowman, Nordy – heart surgery
 Elliott, Paul – Therapy
 Jones, Connie – Therapy
 Jordan, Maryanne – Sciatic nerve
 Manning, Shirley – Recovering
 Meadows, Wade – Heart
 Walters, Suzie -- Home
 Webb, Mary

CANCER PRAYER LIST

Baker, Penny -- Chemo
 Davis, Pat – Leukemia
 Hall, Barry -- Treatments
 Hamula, Tina – (B. Niblett)
 Hooker, Charlotte
 Jordan, Kevin – Liver
 Josie – Cancer
 Simpson, Joyce – Continue in prayer
 Spence, Howard – Mass in lungs
 Tarr, Joann – Stage 1
 Walters, Chuck – Kidney infection

MISSIONS PARTNERS

Morgan, Paul and Laurel (Congo)
 Morgan, James and Sarah (Nepal)
 Dean, Debbie (CRU)
 ESL
 East Salisbury School Partnership
 Lincoln Family (Morocco)

LONG-TERM LIST

Brandt, John – Chron’s disease
 Chapman, Nancy – Wicomico N.H.
 Cheek, Virginia – Genesis
 Duncan, Sue
 Henderson, Jeff – MS
 Merritt, Joan – PRMC
 Muenster, Cindy
 Powell, Missy
 Schneider, Irving – Genesis (Centreville)
 Straub, Marge – Wicomico N.H.
 Wilson, Betty – (S. Wood’s mother
 Workman, Sam and Dolly

CONSIDER THE LILIES

“Why are you anxious . . .?” asked our Lord. Then he said, “Consider the lilies of the field, how they grow; they neither toil nor spin; yet I



tell you even Solomon in all his glory was not arrayed like one of these” (Matthew 6:28-29). His point was that just as God sees to it that the lilies of the field always come forth in their wholeness and

beauty, so God can be counted on to provide for us. People of faith come to understand that marvelous reality.

In the words that follow, a poet reminds us of the reliability of God as seen in the familiar flowers that now are bursting forth in their glorious beauty:

*God does not send strange flowers every year,
 When the Spring wind blows o'er the pleasant
 places,
 The same dear things lift up the same fair faces,
 The violet is here.*

--Adeline Whitney

